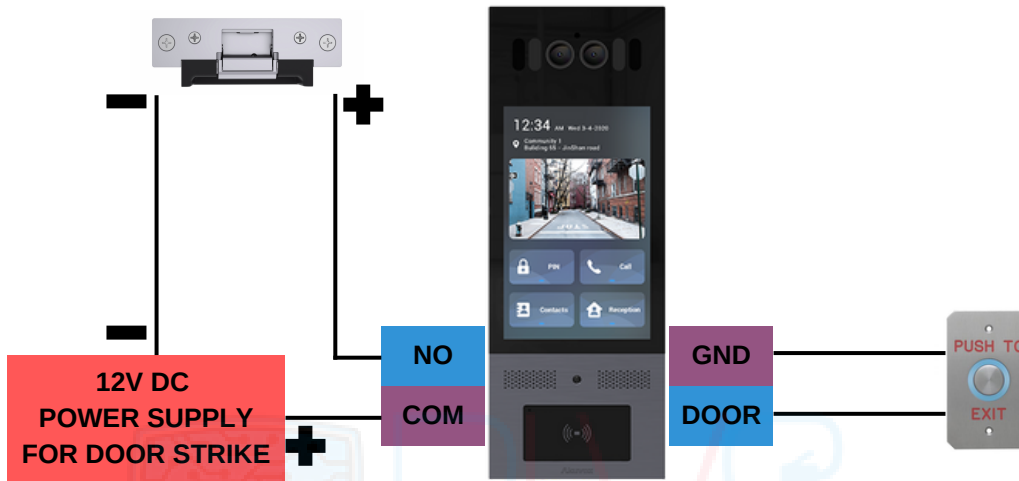


## Akuvox: How to Open the Door with Exit Button

The exit button is a common way to unlock the door strike, this is usually for people who want to leave the building. And they can press the exit button to open the door. There are two different way to use Exit Button with Akuvox Doorphones.

- Using Input of Doorphone

### WIRING

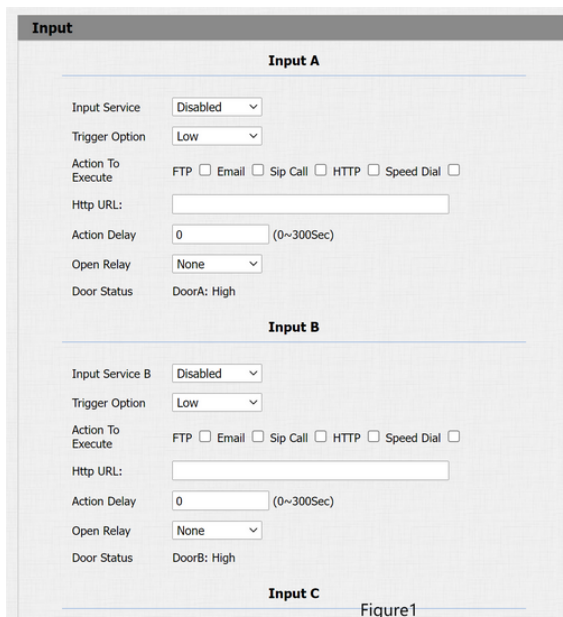


### PROGRAMMING

On the device web interface, navigate to Intercom > Input. (For Akuvox R20X, R26X, R27X, R28X, R29X, X916X )

On the device web interface, navigate to Access Control > Input. (For Akuvox X915X, E16X )

Make sure both exit button and door strike are connected to the device in a proper wiring way.



**Input A**

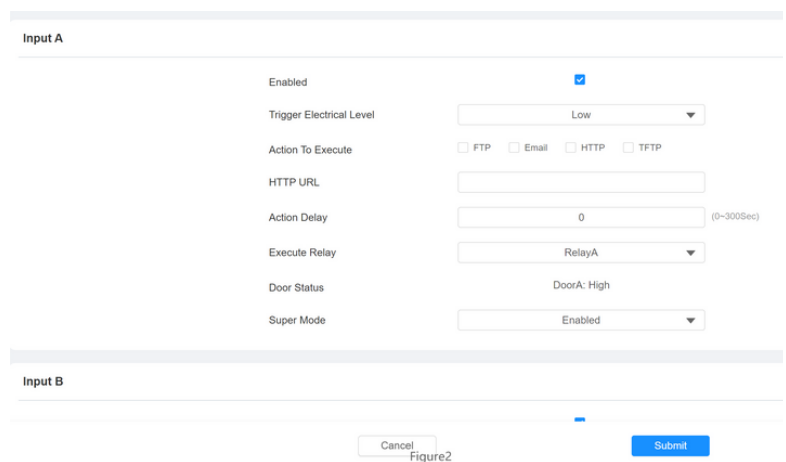
Input Service: Disabled  
 Trigger Option: Low  
 Action To Execute: FTP  Email  Sip Call  HTTP  Speed Dial   
 Http URL:   
 Action Delay: 0 (0~300Sec)  
 Open Relay: None  
 Door Status: DoorA: High

**Input B**

Input Service B: Disabled  
 Trigger Option: Low  
 Action To Execute: FTP  Email  Sip Call  HTTP  Speed Dial   
 Http URL:   
 Action Delay: 0 (0~300Sec)  
 Open Relay: None  
 Door Status: DoorB: High

**Input C**

Figure1



**Input A**

Enabled:   
 Trigger Electrical Level: Low  
 Action To Execute: FTP  Email  HTTP  TFTP   
 HTTP URL:   
 Action Delay: 0 (0~300Sec)  
 Execute Relay: RelayA  
 Door Status: DoorA: High  
 Super Mode: Enabled

**Input B**

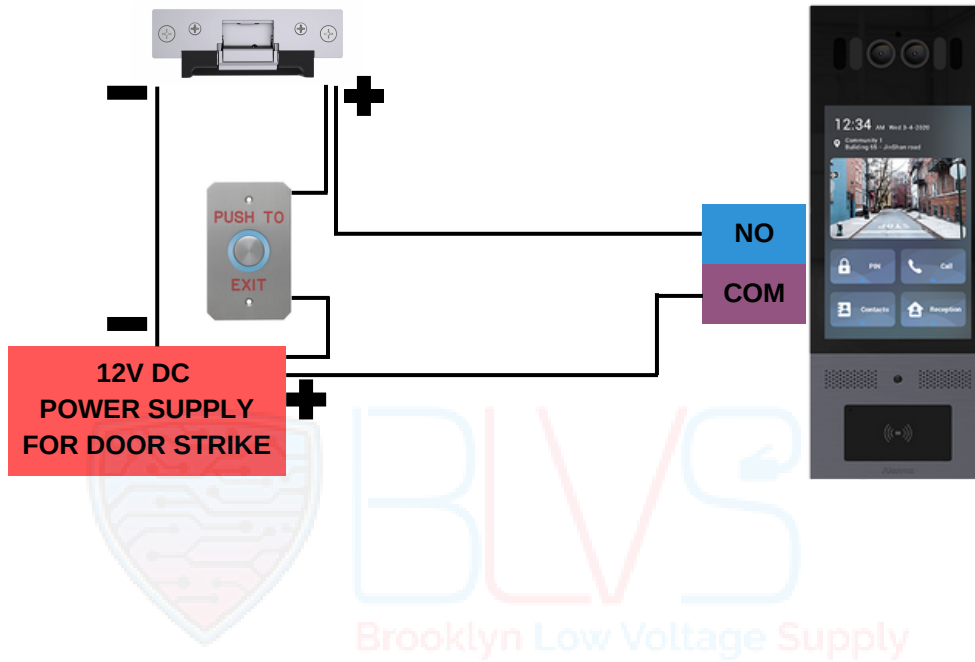
Figure2

Cancel Submit

- Log in to the device webpage, and go to the input page, enable the input feature.
- Choose the Trigger Option, depending on the type of exit button.
- Choose the relay port to be triggered, it must be the relay connected with the door strike.
- Click Submit to save all settings.
- Now if press the exit button, a door strike will be triggered to unlock the door and the status of input will be switched.

- **Using Wiring Methods**

On this method you dont need to do any programming.Do the wiring same as diagram on the below.



Click this button for more resources



**Back to Global Visions  
Akuvox Knowledge Base**

