

Unpacking

Before you start using the device, please check the product version, and ensure that the following items are included in the shipped box:



• EC33 x 1



Plastic wall anchor x 4



Jumper cap x 5



Key x 2

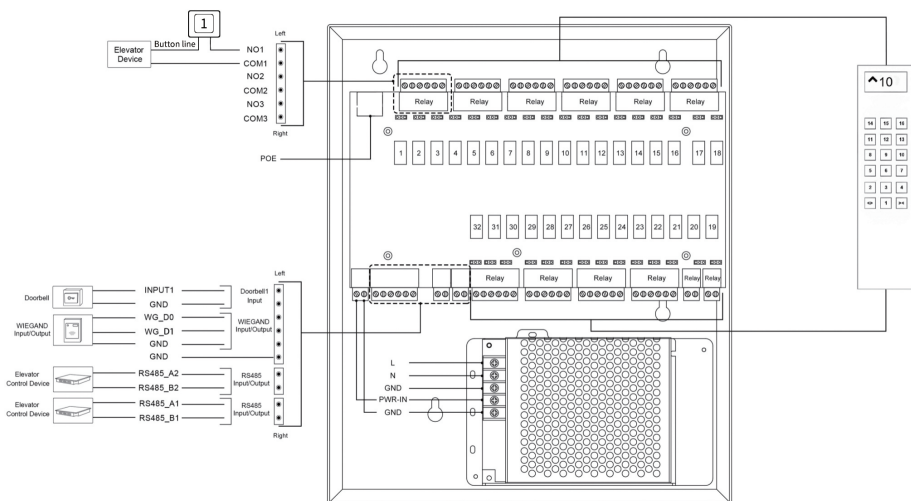


Cable Tie Mounting Base x 1

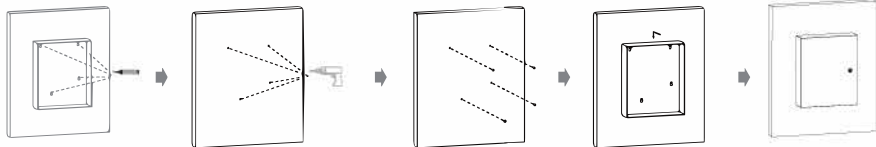


ST4x20 crosshead screw x 4

Device Wiring



Installation



Place the EC33 in the position where it needs to be installed and mark four holes of the back cover on the wall.

Take down the EC33, use the electric drill to drill the hole with a diameter of 6mm and a depth of 25mm.

Insert plastic wall anchors into the holes. Then screw four ST4x20 crosshead screws into plastic wall anchors, and the end of screw should be left about 2mm.

Hang the EC33 as picture shown, then tighten the crosshead screws.

Please wire as needed, the installation is done.

Configuration

- 1. Access the Akuvox device website:** Launch a browser and type in the IP address of device, then enter the username and password to login. (username/password:admin/admin by default)
- 2. Set up Lift access control function of door phone:** On web UI of door phone, go to the path: **Intercom > Lift Control > Akuvox EC33** and fill the username and password of EC33.
- 3. Setting user access rights:** If only use EC33, on web UI of EC33, go to **Directory > User** to set up the floor number for the corresponding user. If use EC33 with Akuvox door phone, on the web UI of door phone, go to **Intercom > User** to set up the floor number for the corresponding user.
- 4. Set up relays' s delay time:** On web UI of EC33, go to **Access Control > Relay** to set up the delay time.

Operation

IP announcement

Hold SW1 button for 5 seconds to announce the IP address.

Reset

Hold SW2 button for 5 seconds to reset the device.



NOTICE:

Quick guide can be viewed on Global Visions website.

